

Shopping streets
+
Centre Jaude
(shopping centre)
=
1 014 locations

Codata Method

- **On-site** data collections
- Distance covered by the data-collector: **25 km**
- **Annual** update
- Detailed **plans**
- Exhaustive within **Codata perimeters**



Vacancy rate

2024 2025
9.5 % **10.3 %**



% Retailers

2024 2025
38.1 % **36.9 %**

Socio-demographic statistics ⁽¹⁾

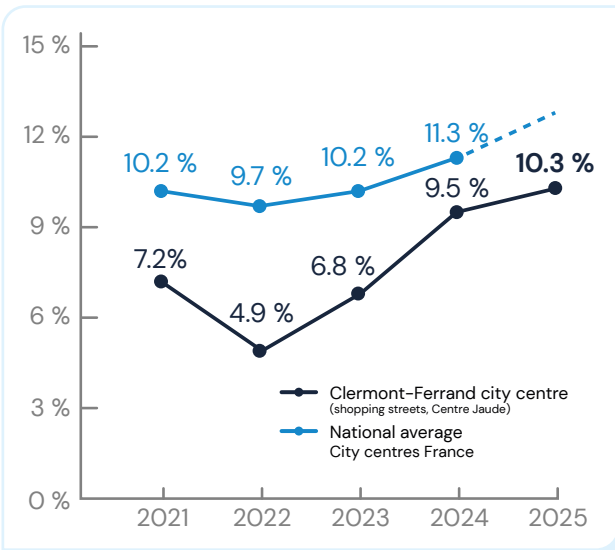
147 327 inhabitants ⁽²⁾

Unemployment rate: **16.1 %** ⁽²⁾

⁽¹⁾ Clermont-Ferrand Commune

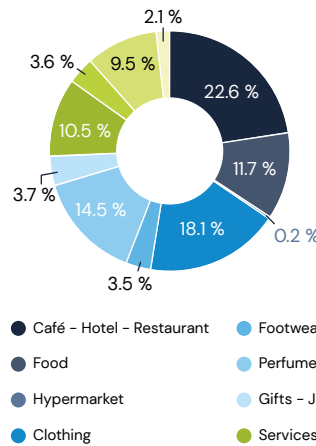
⁽²⁾ INSEE Publication 2024 - Year 2021

History of the vacancy rate

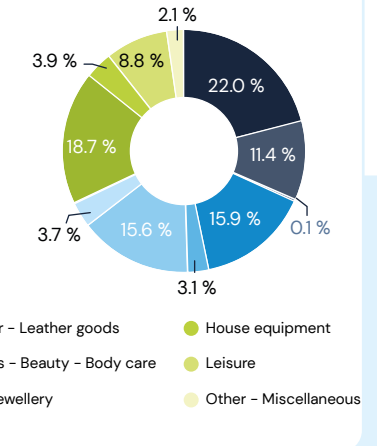


Distribution of activities

Clermont-Ferrand City centre (2025)



National average City centres France (2024)



Retailer openings/closures (between the 2024 and 2025 census)



Retailers who have opened a shop

ADIDAS, AMERICAN VINTAGE, APM MONACO, BIOBURGER, BIOTECH USA, CREDIT AGRICOLE, FRANPRIX, HAAGEN-DAZS, INTERSPORT, INTIMISSIMI, LA BELLE-ILOISE LA CONSERVERIE, MR.BRICOLAGE, OPTIC 2000, SESSUN, TEZENIS, WOK TO WALK

Retailers who have closed a shop

ABEILLE ASSURANCES, ACOTE, BEAUTYBAR ONE, CHAMAS TACOS, COMPTOIR DES COTONNIERS, COPPER BRANCH, CYMBELINE, ESTHETIC CENTER, ETAM, GARNIER-THIEBAUT, KAPORAL, KARTELL, MINELLI, NATUR HOUSE, OXYBUL, SAVE, STUDIO COMME J'AIME, THE HEMP CONCEPT, VANS

Codata perimeters can be modified from year to year according to the evolution of the commercial structure of studied sites.